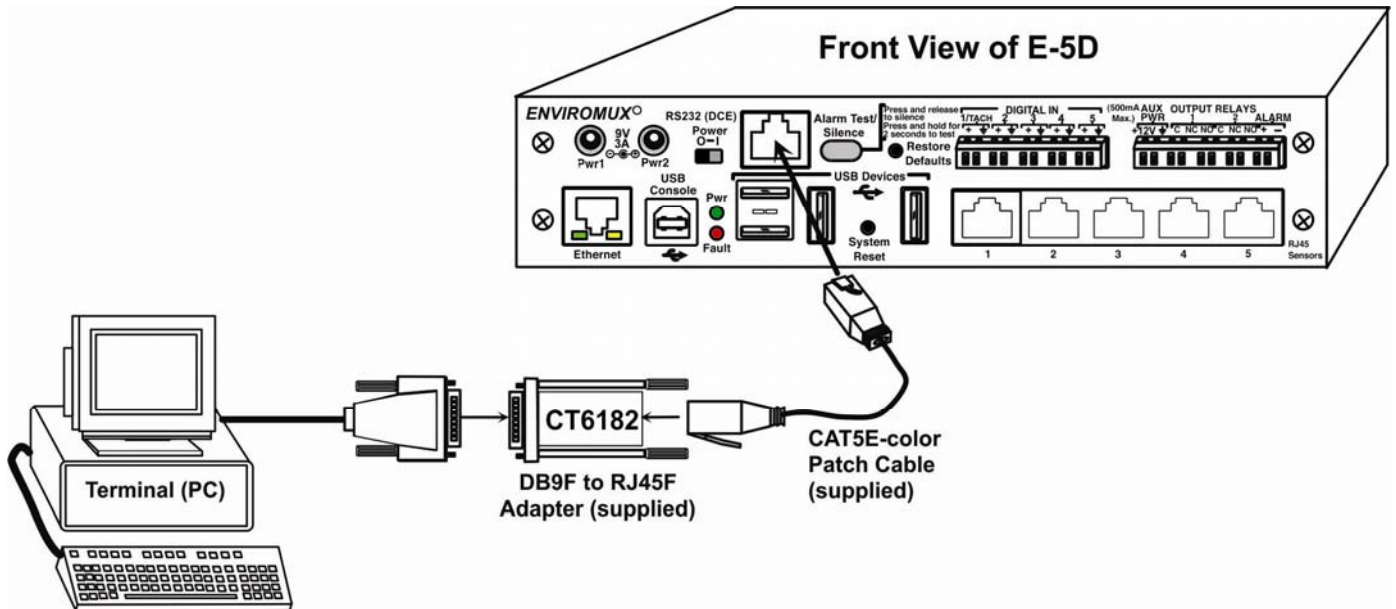
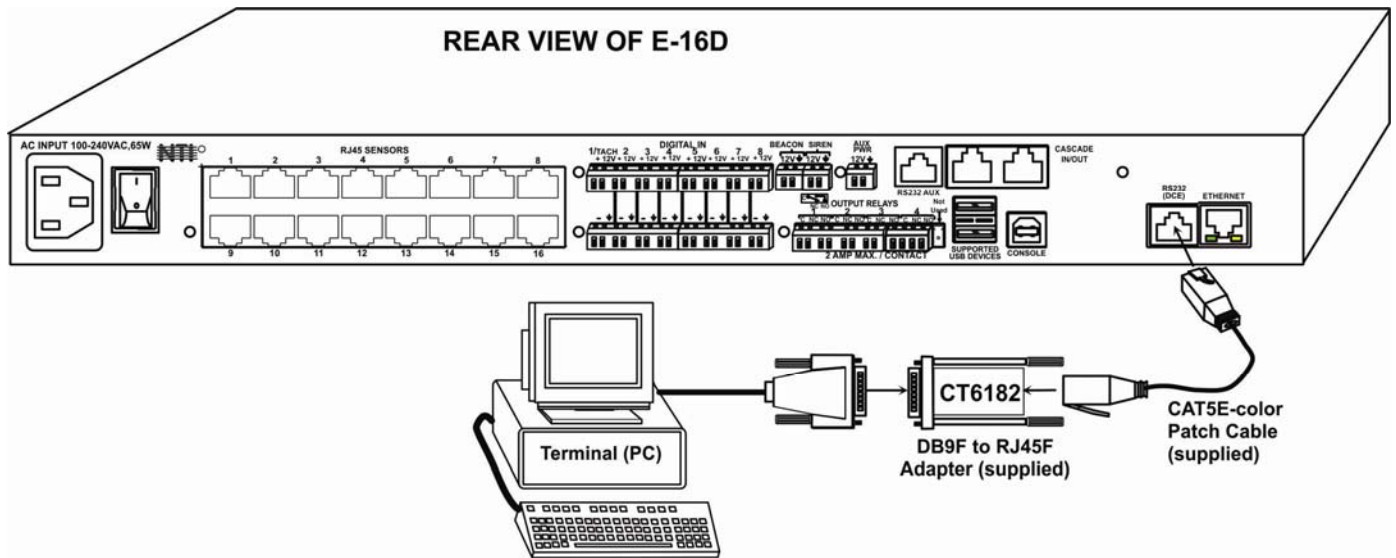


E-xD: RESTORE DEFAULTS VIA RS232

This procedure is provided to enable the administrator to restore defaults to the E-5D\16D using the “RS232” port.

Note: This procedure has been tested to work properly using Microsoft® HyperTerminal. We cannot confirm whether other terminal programs will give satisfactory results.

1. Connect one end of a CAT5 patch cable (supplied) to the port labeled “RS232” on the rear of the E-16D (or front of the E-5D). Plug the other end of the CAT5 cable into an RJ45-to-DB9F adapter (supplied), and connect the adapter to the RS232 port on the control terminal.

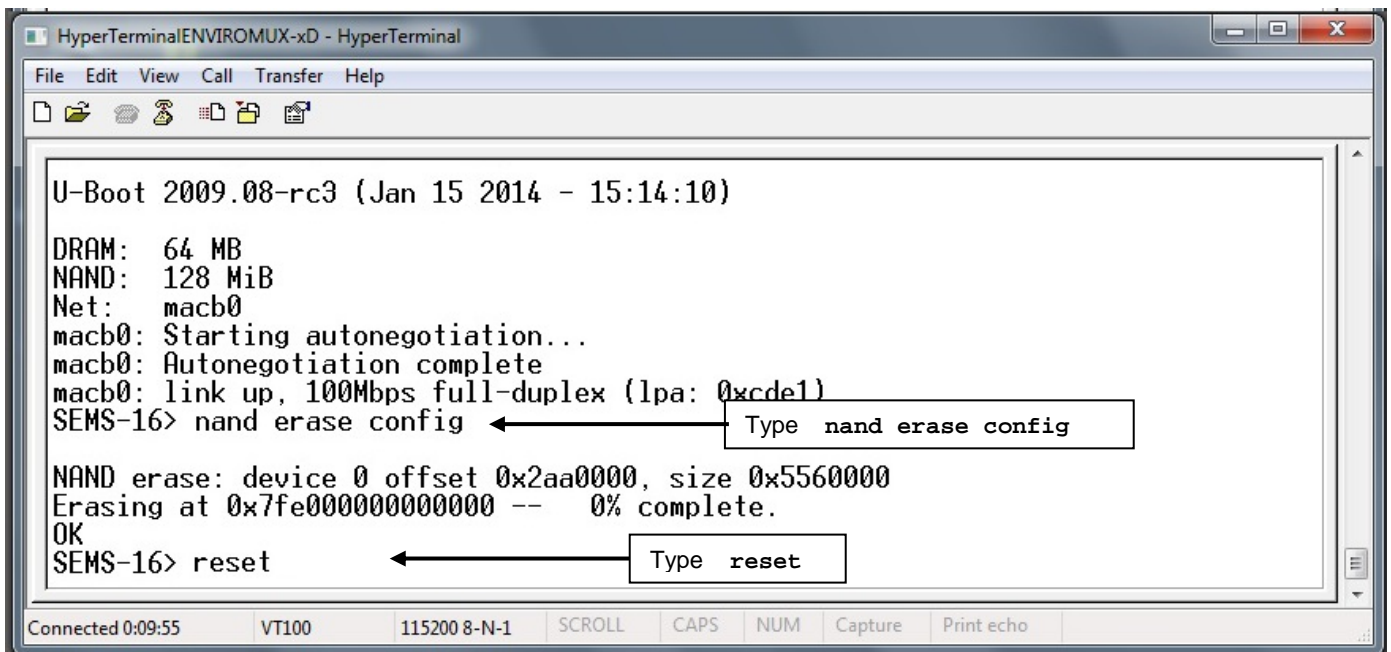


Connect a terminal for direct RS232 serial communication

2. Using the terminal connected to the ENVIROMUX, start the terminal program (e.g. Windows HyperTerminal) and configure it as follows:

- direct connection (using the appropriate CPU local serial Com port)
- 115200 bps
- 8 bits
- no parity
- 1 stop bit
- no flow control
- VT100 terminal mode.

3. Power ON the ENVIROMUX and as the ENVIROMUX begins to boot, press and hold the <Tab> key. (If you fail to press this key in time the system will continue booting and you will have to power OFF the ENVIROMUX and start over.)



Erase the configuration of the ENVIROMUX

4. At the “SEMS-16>” prompt, type;

```
SEMS-16> nand erase config
```

5. Press <Enter> key.

The ENVIROMUX will erase all configuration settings and restore the ENVIROMUX to factory default settings. ALL USER CONFIGURATION AND SENSOR CONFIGURATION SETTINGS WILL BE LOST.

When finished, the “SEMS-16>” prompt will return.

6. At the prompt, type `reset` and press <Enter>. The ENVIROMUX will restart.

```
macb0: Autonegotiation complete
macb0: link up, 100Mbps full-duplex (lpa: 0xcde1)

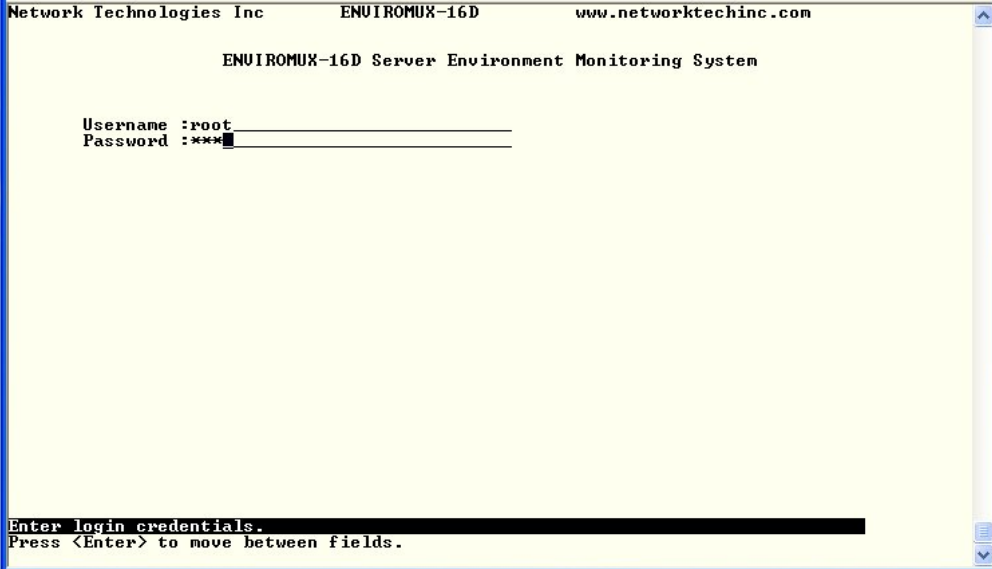
NAND read: device 0 offset 0xa0000, size 0x200000
2097152 bytes read: OK
## Booting kernel from Legacy Image at 20000000 ...
   Image Name:   Linux-2.6.38
   Image Type:   ARM Linux Kernel Image (uncompressed)
   Data Size:    1770976 Bytes = 1.7 MB
   Load Address: 20008000
   Entry Point:  20008000
   Verifying Checksum ... OK
   Loading Kernel Image ... OK
OK

Starting kernel ...

Board initialized
Generating RSA1 Key...
Generating RSA Key...
Generating DSA Key...
Generating SSL certificate...
Starting system daemons
-
```

Restoring the default configuration of the ENVIROMUX

7. As the ENVIROMUX restarts, it will restore defaults (as shown in image above) and then present the ENVIROMUX login screen (below).



```
Network Technologies Inc   ENVIROMUX-16D   www.networktechinc.com

ENVIROMUX-16D Server Environment Monitoring System

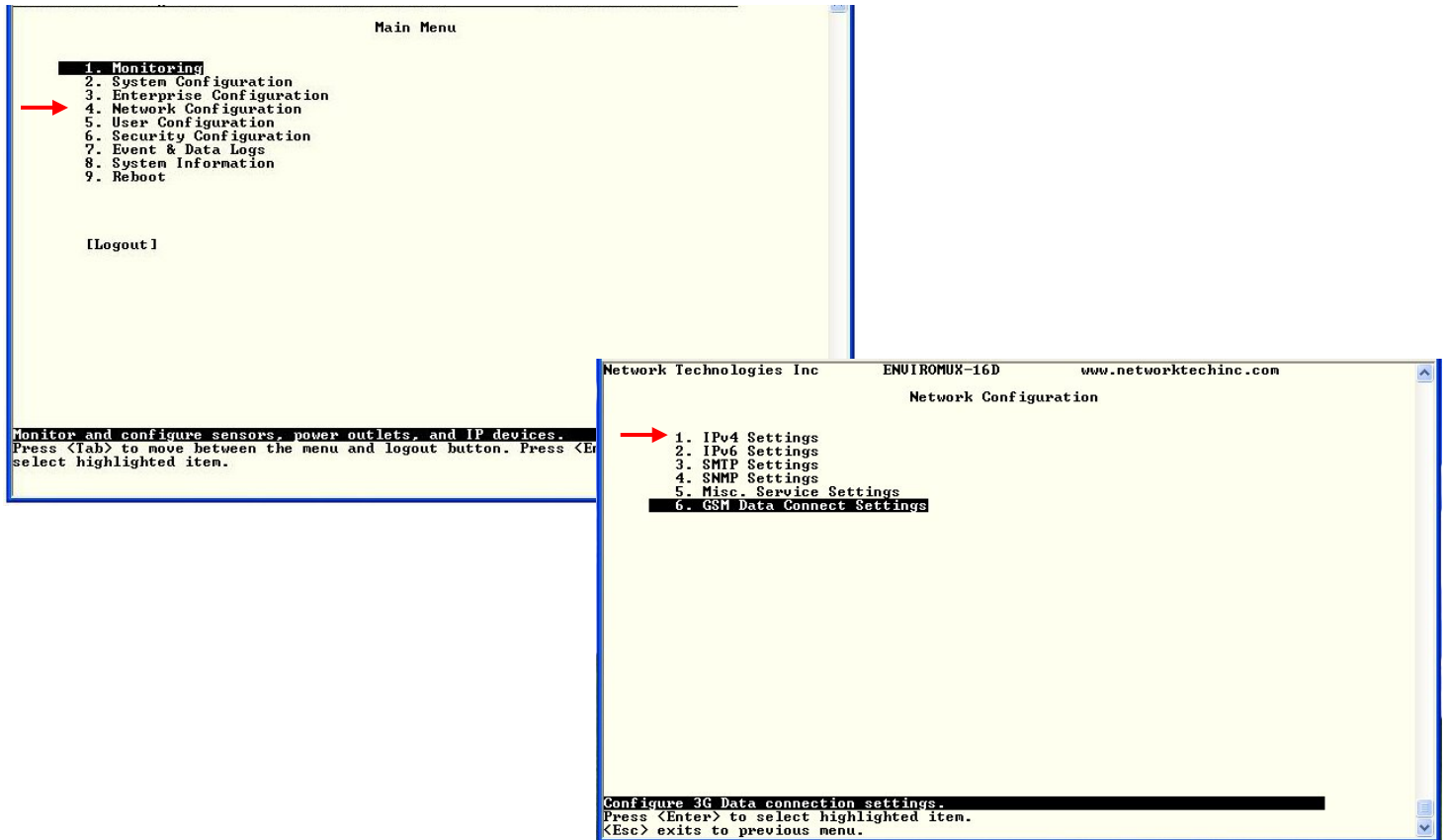
Username :root
Password :***

Enter login credentials.
Press <Enter> to move between fields.
```

Text Menu Login Screen

At this point you can either access the ENVIROMUX using the Device Discovery Tool (found on the manual CD and our website at <http://www.networktechinc.com/download/d-environment-monitor-16.html>) to change the network settings back to what they were, or you can login to the text menu (below) using the default administrative user "root" and password "nti".

From the text menu, to change the network settings, enter <4>, then <1> to get to the network configuration menu.



Enter your settings.

Be sure to <Tab> to the Save and press <Enter> before exiting the menu.

