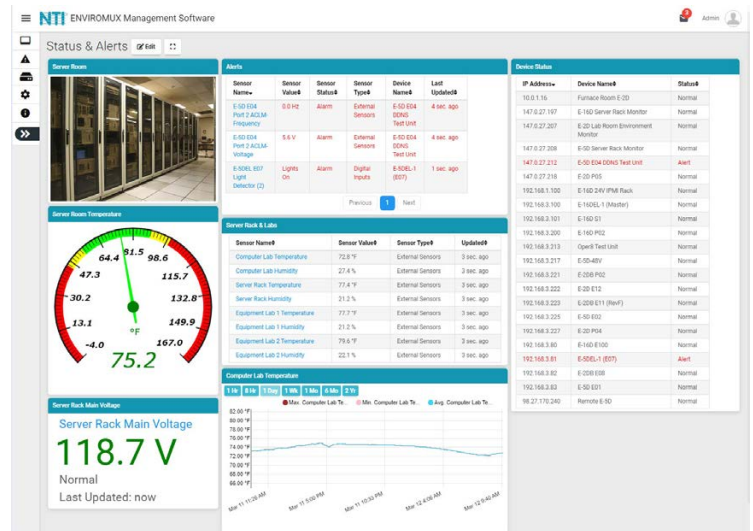


Self-Hosted Management Software for Enterprise Environment Monitoring Systems

ENVIROMUX®

- Self-hosted software – ideal for users in industries that require local software management solutions for security or data privacy purposes.
 - Install on a Windows-based server or computer as a service or application.
 - Operating system requirements: Windows 7/8/10/11 32-bit or 64-bit, Windows Server 2008/2012/2016/2019/2022 32-bit or 64-bit.
 - Virtual machines are supported, including VMware.
 - One-time purchase – no monthly fees.
 - E-MNG-SH requires internet connection for auto license updates.
 - E-MNG-SHNR uses a non-renewing permanent license – does NOT require internet connection.
 - Supports offline activation.
- Units may be monitored individually or in a group.
- Display values and status for individual sensors or list of sensors.
- Any computer, smartphone, and/or tablet with a web browser installed can be used to access the software.
 - Access is operating system independent through the HTML5 user interface on the computer/smartphone/tablet's web browser.
 - No clients or special apps to install.
- Supports 1,000 users accessing the software program at the same time.
 - Users can configure their own dashboards to display the data relevant to them and the window arrangement.
 - Customize dashboards to display unit status, sensor data, gauges, graphs, and IP camera snapshots.
- Sends email and/or SMS alert messages.
 - Supports all email servers, including Gmail.
 - SMS providers supported: Twilio, Sinch
 - Customize messages for each sensor by creating message templates.
- Configure pre-loaded geographical maps or upload custom floor plan maps/images for a visual representation of sensor locations.
 - Provides users with a real-time view of their facility, and the physical location and status of all connected ENVIROMUX environment monitoring systems and sensors.
- Schedule and customize PDF reports that can be viewed/saved in the software and emailed to selected users. In addition, reports based on user-configured sensor triggers can be sent.
- Saves up to 1,000 user-programmable IP camera recordings.
 - Any programmed event or trigger can initiate recording of an IP camera based on sensor value or time schedule.
 - Recordings are created using snapshots captured based on the refresh rate set for the IP camera.
 - Recording duration can be set between 5 seconds and 10 minutes.
 - Each recording is labeled with the name of the camera the images are captured from with the date/time.
- Full HTTPS support with auto host-name update and certificate generation.
- Download sensor graph data and event logs.
- Automatically reloads the E-2D/5D/16D/MICRO/1W configuration when changes are made directly on an E-2D/5D/16D/MICRO/1W unit.
- NTI will provide customer, without charge, copies of any appropriate updates/enhancements for 12 months. This software update service is optionally extendable every twelve months for 20% of list price.



E-MNG-SH Self-Hosted Enterprise Environment Monitoring System Management Software

- Self-hosted software – install on a Windows-based server/computer.**
- No clients or special apps to install.**
- Access from anywhere using a web browser on a computer, smartphone, &/or tablet.**
- Monitor & configure up to 3,000 units & all connected sensors.**
- Sends email and/or SMS alert messages.**
- Display values and status for individual or list of sensors.**
- Customizable monitoring and layout for each user.**
- One-time purchase – no monthly fees.**

Optional Management Software for E-2D/5D/16D, E-MICRO-TRH(P), and/or E-1W(P).

E-MNG-SH is a self-hosted software program that provides an easy-to-use, unified interface for monitoring and configuring up to 3,000 E-2D/5D/16D/MICRO/1W units and all connected sensors (internal, external, digital input, and remote IP sensors (E-MICRO/1W)) and output relays via Ethernet. The software is installed on a Windows-based server or computer to actively poll all units for status information and alerts. Any computer, smartphone, or tablet with a web browser can be used to access the software. It allows users to be kept up to date on sensor statuses and be alerted instantly when a sensor goes out of range of a configurable threshold.

- Features coming soon in upcoming releases:**
 - Compatibility with PWR-RMT-RBT-C13 Remote Power Reboot Switch
 - Support for live stream video from IP cameras.
 - Auto discovery of NTI devices from server.
 - Improvements to PDF reports.
 - Push notifications from browser on Android and iPhone smartphones/tablets.
 - Plot the placement of E-LLDC-xx Liquid Location Detection Sensor Cables on floor plan maps to visually see the specific location of liquid presence when detected.