

# ENVIROMUX-MINI-LXO

## Quick Installation Guide

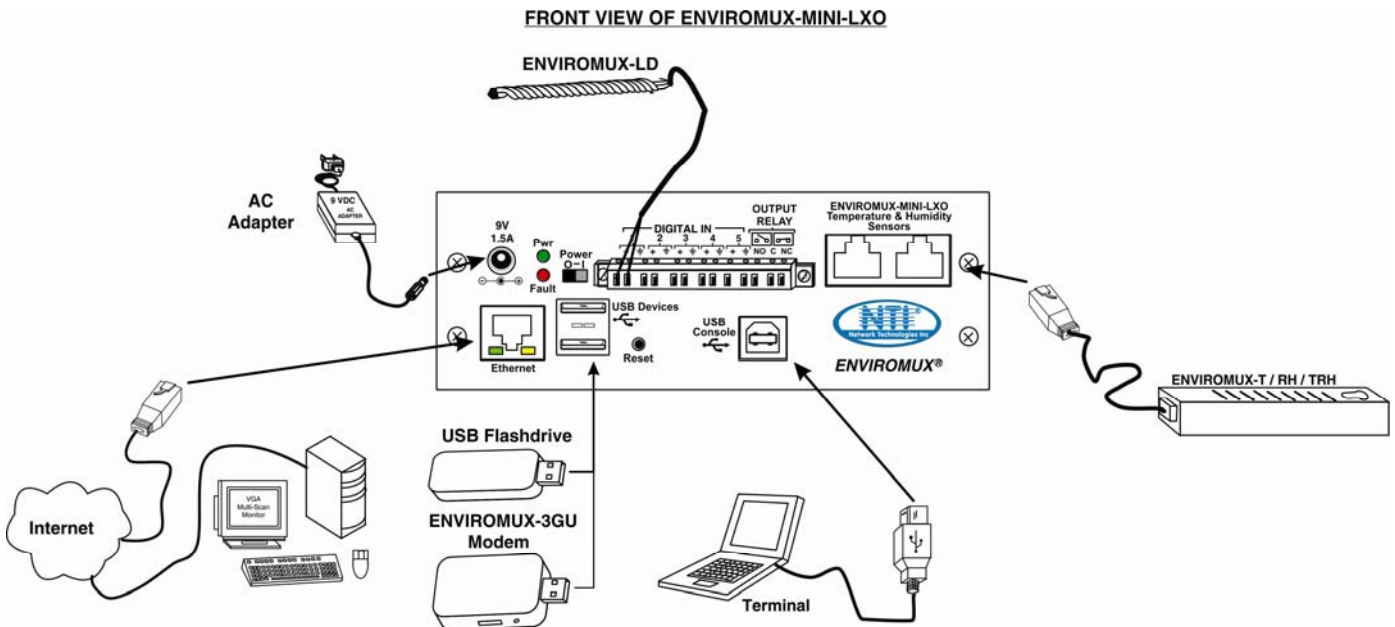


The ENVIROMUX-MINI-LXO (ENVIROMUX) is a Server Environment Monitoring System designed to monitor, from a remote location, the critical environmental conditions in cabinets and rooms containing servers, hubs, switches and other network components. Remote monitoring is provided via a 10/100BaseT Ethernet web interface, secure web interface, SSH, or Telnet. The input data is filtered, collected, analyzed and processed to allow the user to configure it to meet individual requirements. The user is able to specify parameters for all monitored signals. When a sensor exceeds the configured threshold, the unit will signal an alert. Alert methods include email, SMS, SNMP traps, web-page alerts, and a visual indicator (red LED).

The ENVIROMUX-MINI-LXO will monitor temperature, humidity, and detect the presence of water on a flat surface (such as the floor). The unit also has four sets of terminal block pairs for the connection of contact-closure sensors

### Installation

1. Mount the ENVIROMUX as desired. Remove the tabs from the rear, turn them around, and re-secure. Mount ENVIROMUX to the wall or within in a rack. (We have provided screws for Zero-RU mounting only. Use appropriate hardware for wall mounting.)
2. Connect each of the sensors (purchased separately) to the ENVIROMUX. Mount the sensors where they are needed.
  - A. Connect Temperature and/or Humidity sensors to the RJ45 ports on the ENVIROMUX.
  - B. Connect contact sensors (i.e. ENVIROMUX-GBS-P glass break sensor, ENVIROMUX-SDS-PA smoke detection sensor, ENVIROMUX-LD water detection sensor and others) to the terminal blocks labeled "DIGITAL IN". Connect each two-wire contact sensor using 16-26 AWG wire.
3. Connect the ENVIROMUX to the Ethernet.
4. Connect the ENVIROMUX to the Ethernet for maximum remote system management using the "Ethernet" port and CAT5/5e/6 patch cable.
5. For limited local system control via serial communication connect a terminal to the "USB Console" port using a USB A-B male-to-female cable (provided). Install drivers to PC (see manual page 11 for instruction).
6. Connect the AC adapter.

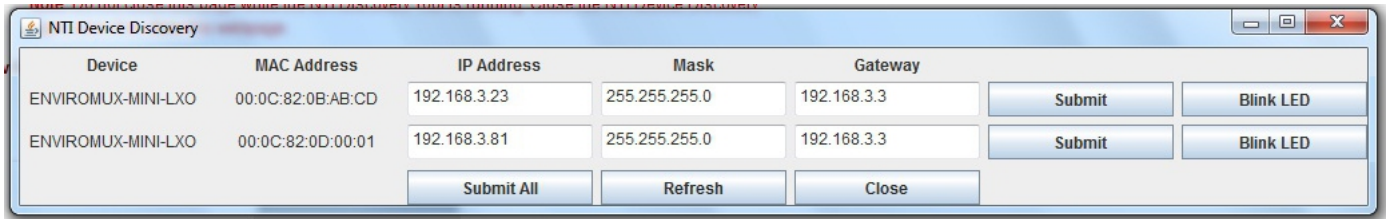


## Setup

1. Use the Device Discovery Tool (from <http://www.networktechinc.com/download/d-environment-monitoring.html>) to locate the ENVIROMUX on the network. Update the IP address, Mask, and Gateway as needed to connect to the local network. Click on *Submit* to update the ENVIROMUX.

**Note: The computer using the Device Discovery Tool and the ENVIROMUX must be connected to the same physical network in order for the Device Discovery Tool to work.**

If there are multiple ENVIROMUX-MINI-LXO in the network, use the “BLINK LED” feature in the Device Discover Tool (page 21 of the manual) to identify which ENVIROMUX-MINI-LXO is being updated. To use it, press the “BLINK LED” button and the LEDs on the effected ENVIROMUX will blink until the button is pressed again or the Device Discover Tool is closed.



**Note: The Device Discovery Tool requires the Java Runtime Environment to operate. Here is a [link](#) to the web page from which it can be downloaded.**

2. Type the updated IP address into the browser address bar.
3. Log in to the web interface as the administrator- **username = root password= nti** (letters are case sensitive)
4. Configure Network and SMTP server settings (**Administration->Network** ).
5. Set the date and time.
6. Configure SNMP settings.
7. Add users (**Administration->Users->Add New User**) and specify email address, contact methods, etc. as needed.
8. Temperature and Humidity sensors will be automatically detected. External contact sensors and sensors connected to “DIGITAL IN” must be added manually through the web interface before configuring them.
9. Configure sensors (**Monitoring->Summary->Select a sensor->Configure button**) as desired for thresholds, sampling, alert notification methods, etc.
10. Configure the log settings (**Log->Log Settings**) for log record overflow action and contact methods.
11. To access ENVIROMUX using a terminal locally connected to the “USB Console” port (shown in drawing on first page), set port on terminal at 115200bps, 8-N-1, no flow.  
 Press **<Enter>**,  
 Type **<root>** at the login prompt and press **<Enter>**,  
 Type **<nti>** for the password at the menu login screen,  
 Press **<Enter>** again to access the main menu.

**Available Sensors** (Sold separately) :

Model	Description
ENVIROMUX-T-x	Temperature Sensor
ENVIROMUX-RH-x	Humidity Sensor
ENVIROMUX-TRH-x	Temperature and Humidity Sensor
ENVIROMUX-LDx-y	Liquid Detection Sensor-Digital
ENVIROMUX-SDS-PA	Smoke Detection Sensor
ENVIROMUX-CMD-P	Carbon Monoxide Detector
ENVIROMUX-M-DCS	Door Contact Sensor
ENVIROMUX-IMD-P	Infrared Motion Sensor
ENVIROMUX-GBS-P	Glass Break Sensor
ENVIROMUX-EBS	Emergency/Panic Button
ENVIROMUX-TDS	Tamper Switch

For more details, specifications, and troubleshooting tips, see the Installation and Operation Manual or go to [www.networktechinc.com](http://www.networktechinc.com).