

E-1W(P) Environment Monitoring System with 1-Wire Sensor Interface Quick Installation Guide



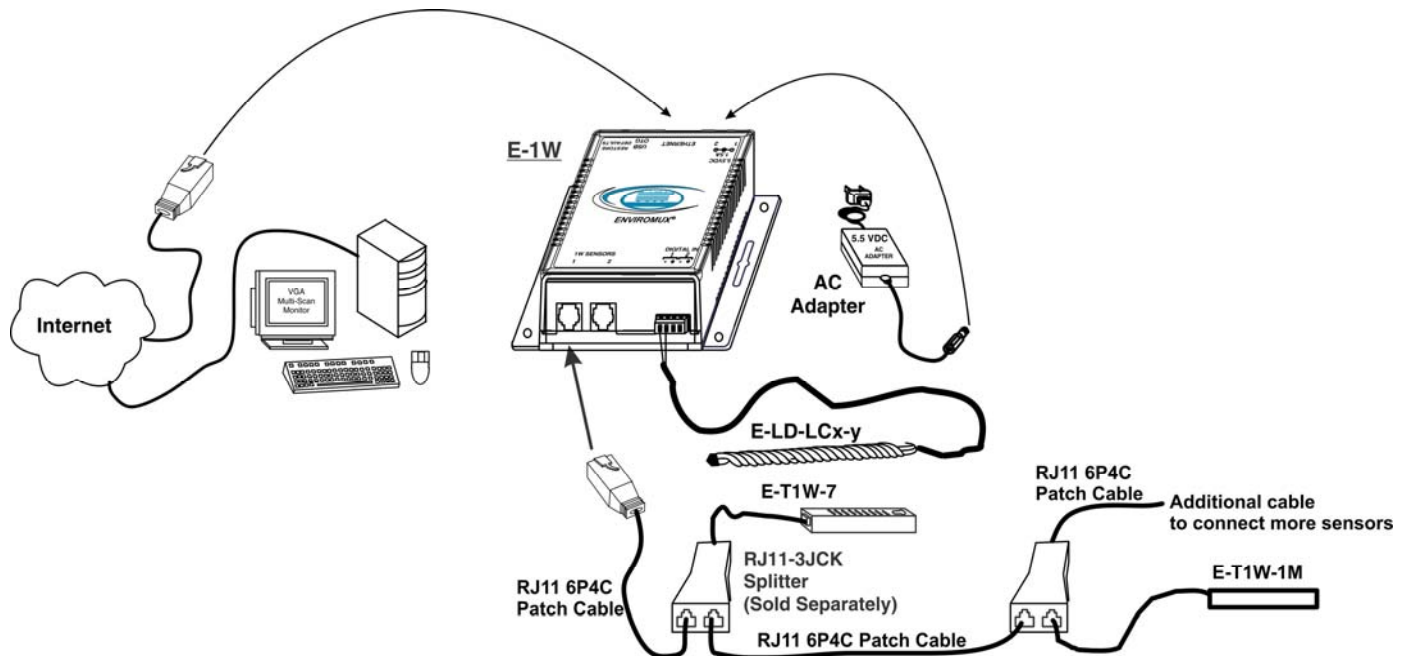
The ENVIROMUX® Environment Monitoring System (ENVIROMUX) with 1-Wire Sensor Interface monitors (from a remote location) critical environmental conditions, such as temperature, humidity, dewpoint, liquid water presence, intrusion, and smoke. When a sensor goes out of range of a configurable threshold, the system will notify you via email, web page, network management (SNMP traps), Syslog message and/or SMS messages (via external USB 3G modem).

The E-1W features two RJ11 6P4C sensor ports for the connection of up to 24 1-wire sensors, and two dry contact inputs.

The E-1WP features two RJ11 6P4C sensor ports for the connection of up to 24 1-wire sensors, two dry contact inputs for the connection of contact-closure sensors and built-in Power over Ethernet (PoE).

Installation

1. Mount the ENVIROMUX as desired. Mount the ENVIROMUX to the wall or within in a rack. Use hardware appropriate for your mounting method of choice.
2. Connect each of the sensors (purchased separately) to the ENVIROMUX. Mount the sensors where they are needed.
 - A. Connect Temperature sensors to the "1W Sensor" RJ11 ports on the ENVIROMUX using RJ11 6P4C patch cables and RJ11-3JCK splitters (sold separately). Patch cables must be wired straight through (pin1 to pin 1, pin 2 to pin 2, etc.).
 - B. Connect contact sensors (i.e. E-GBS-P glass break sensor, E-SDS-PA smoke detection sensor, E-LD-LC water detection sensor and others) to the terminal blocks labeled "DIGITAL IN". Connect each two-wire contact sensor using 16-26 AWG wire.
3. Connect the ENVIROMUX to the Ethernet for maximum remote system management using the "Ethernet" port and CAT5/5e/6 patch cable.
4. Connect the AC adapter (required for E-1W model only).

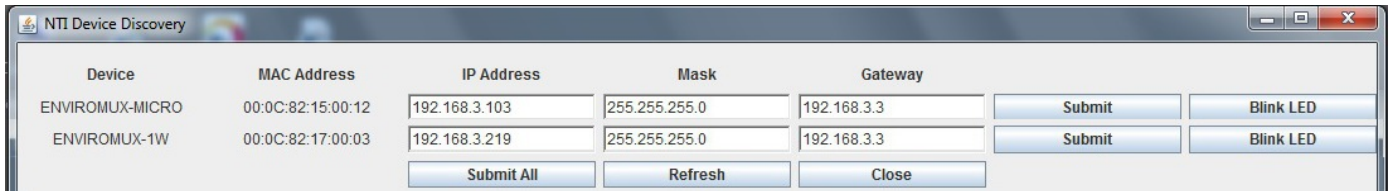


Setup

1. Use the [Device Discovery Tool](#) to locate the ENVIROMUX on the network. Update the IP address, Mask, and Gateway as needed to connect to the local network. Click on *Submit* to update the ENVIROMUX.

Note: By default, the E-1W will be assigned an IP address by your DHCP server, so unless you want to assign one manually, once you know the IP address assigned by the DHCP server, proceed to step 2 to access the E-1W.

Note: The computer using the Device Discovery Tool and the ENVIROMUX must be connected to the same subnet in order for the Device Discovery Tool to work.



Note: The Device Discovery Tool requires the Java Runtime Environment to operate. A link to the web page from which it can be downloaded and installed is provided on the CD.

2. Type the updated IP address into the browser address bar.
3. Log in to the web interface as the administrator- **username = root password= nti** (letters are case sensitive)
4. Configure Network and SMTP server settings (**Administration->Network**).
5. Set the date and time.
6. Configure SNMP settings.
7. Add users (**Administration->Users->Add New User**) and specify email address, contact methods, etc. as needed.
8. All sensors will be automatically detected at boot-up. To add more sensors after boot-up, click on "Detect Sensors" on the Summary Page after making connection.
9. Configure sensors and alerts as desired for thresholds, alert notification methods, etc.

Some Available Sensors (Sold separately) :

Model	Description
E-T1W-7	Temperature Sensor
E-T1W-1M	Temperature Sensor
E-TH1W-7	Temperature/Humidity Sensor
E-LD-LCx-y	Liquid Detection Sensor-Digital
E-SDS-PA	Smoke Detection Sensor
E-CMD-P	Carbon Monoxide Detector
E-M-DCS	Door Contact Sensor
E-IMD-P	Infrared Motion Sensor
E-GBS-P	Glass Break Sensor
E-EBS	Emergency/Panic Button
E-TDS	Tamper Switch

For a complete list of compatible sensors, go to <http://www.networktechinc.com/environment-monitor-1wire.html>

Cables

RJ11 6P4C Patch cables must be wired straight through (pin 1 to pin 1, pin 2 to pin 2, etc).

E-RJ11-xx RJ11 6P4C patch cables can be ordered from NTI (where xx = 7, 25 or 50 foot). Custom lengths (E-RJ11-xx-C) are also available.

Contact your nearest NTI distributor or NTI directly for all of your cable needs at 800-RGB-TECH (800-742-8324) in US & Canada or 330-562-7070 (Worldwide) or at our website at <http://www.networktechinc.com> and we will be happy to be of assistance.

For more details, specifications, and troubleshooting tips, see the Installation and Operation Manual or go to www.networktechinc.com.